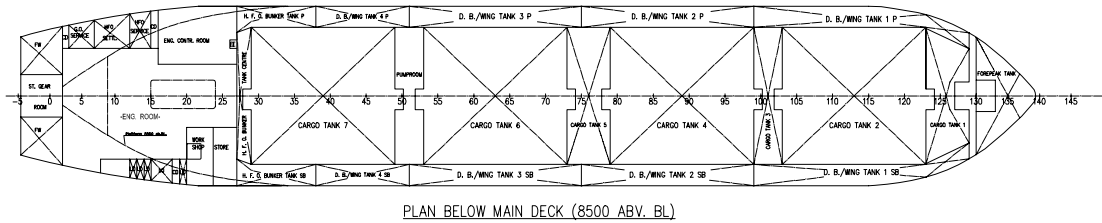
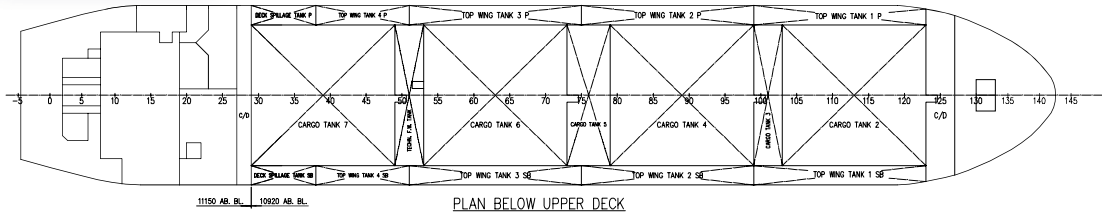


## MAIN PARTICULARS

Flag	Monrovia
Callsign	A8MQ2
Class	Germanischer Lloyd
Notation	+100 A5 E3 ESP OIL TANKER, +MC E3 AUT
IMO number	8821759
Built	1991 rebuilt 2001
DWT (all told)	7030 ton
GT	4609
NT	1662
Loa	99.50 m
Beam	17.11 m
Depth	10.90 m
Draft	7.10 m

## BUNKER DELIVERY

Speed at summer draft	appr. 10.5 kn
Propulsion power	Bergen Diesel AS, BRM 8 Diesel, 3235 kW
Bowthrustrer power	500 kW
Number of cargo tanks	7
Cargo tank volume	7769 m <sup>3</sup>
Slop tank volume 98%	56 m <sup>3</sup>
Segregations	5 segregations
Cargo pumps	7 deepwellpumps; 4 with capacity 600 m <sup>3</sup> /h, 1 with capacity 300 m <sup>3</sup> /h and 2 with capacity 120 m <sup>3</sup> /h (all against 10 bar and 1 Cst)
Bunkerjib	SWL 1.0t/20m with 2 separate lines & Hoses for IFO and MGO.
Bunker hoses	IFO 6" MGO 4"
Hose Handling crane	SWL 1.2t/16m
Blender unit	Capacity 372 m <sup>3</sup> /h at 400 cSt, working range 10-800 cSt. Automated viscosity control. Separate line for clean DO.



MEASURING EQUIPMENT	Viscosity measurement	Continuous display of viscosity and temperature.	
	Sampling device	Flow proportional Sampler.	
	Flow meters	Separate flow meters for each segregation. Ticket print with delivered volume.	
	ADDITIONAL EQUIPMENT	Tank heating system	Thermal oil heater (oil fired), heating surface 47.5 m <sup>2</sup> and thermal oil heater (exh. gas heated), heating surface 150.0 m <sup>2</sup>
		Fendering	3 Yokohama fenders, diameter 1.9 m
Oilbooms		total length of oilboom 300 m, 900 mm high	
Additional mooring equipment		WINDLASSES: 1 PC. BRÖHL/NORWINCH with double drums WINCHES: 1 PC. BRÖHL/NORWINCH with double drums	
CARGO TANK VOLUMES	Cargo tank 1	216 m <sup>3</sup> each	
	Cargo tank 2	1689,5 m <sup>3</sup> each	
	Cargo tank 3	317,2 m <sup>3</sup> each	
	Cargo tank 4 & 6 & 7	1739,2 m <sup>3</sup> each	
	Cargo tank 5	487,9 m <sup>3</sup> each	
OTHER TANK VOLUMES	Slop tank 1	216 m <sup>3</sup>	
	Segregated ballast tanks	3666,8 m <sup>3</sup> total	
	Bunker capacity	420,7 t total	

For all information, call or fax

T: +32 3 202 30 60

F: +32 3 541 40 21

